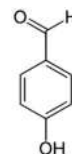




## TECHNICAL DATA SHEET

**Product name:** 4-Hydroxybenzaldehyde



### Specifications

Parameters	Specifications	Typical results
Appearance	Pale yellow to cream colour crystalline powder	Cream colour crystalline powder
Water Content	NMT 0.5%w/w	0.32%
Assay Purity	NLT 99%	99.67%

### Stability and storage:

4-Hydroxybenzaldehyde should be stored in a cool, dry, and well-ventilated area, preferably under an inert gas, to prevent oxidation and degradation. Keep containers tightly sealed to prevent moisture absorption. Avoid storage with strong oxidizing agents, acids, and bases.

4-Hydroxybenzaldehyde should be stored in a cool, dry, and well-ventilated area, preferably under an inert gas, to prevent oxidation and degradation.

### Application Areas

4-Hydroxybenzaldehyde (4-HBA) is a precursor in the synthesis of several pharmaceuticals, including antihypertensive agents, anti-inflammatory drugs, and antibiotics like 4-Hydroxyphenylglycine, which is used in the manufacture of certain antibiotics.

It exhibits bactericidal activity and is used in the synthesis of drugs like trimethoprim and cephalosporins.

4-HBA is a crucial intermediate in the industrial synthesis of vanillin, a widely used flavoring agent.

It's also used directly as a flavoring agent in food and beverages due to its almond-like aroma.

It is used in perfumes, soaps, and cosmetics as a fragrance ingredient.

Its antioxidant properties make it a valuable additive in polymer formulations to prevent degradation.

### General information


CAS No.	: 123-08-0
IUPAC Name	: 4-Hydroxybenzaldehyde
Synonyms	: 4-formylphenol
EC No	: 204-599-1

### Physical/Chemical properties

Molecular Formula	: C7H6O2
Molecular weight	: 122.123
Melting point	: 116 °C
Refractive index	: 1.5105
Solubility	: Water, Ether, Alcohol
Flash Point	: 174°C
Physical state at 20°C	: Solid

### Hazard classification & labelling

Single Word : Danger

Pictogram : 

Classification according to Regulation (EC) No 1272/2008: : H318

Precautionary statement(s) : P280,P305+P351+P338